

**Folder: Science P1-3**  
**Topic: Energy – Heat, p11-14**  
**Level: B**

## Using the Snapshot

### Introduction

By using the snapshot, you can get the LogIT software to draw a bar graph for you. This can be more accessible for P1-3 pupils than a line graph.

The teacher sets up the datalogger to record snapshots. Then the green button is pressed every time a snapshot is required. Finally, the datalogger is plugged into the computer, the data is 'fetched' and a bar graph is drawn.

### 1. Using the snapshot to record heat levels round the school/classroom

#### You need:

**LogIT Explorer**

**A temperature probe**

**A computer and connecting USB cable** (see 'An introduction to using the LogIT Explorer datalogger' document)

#### Now here's what to do:

##### Step 1

*Do not plug the datalogger into the computer.*

- Plug a temperature probe into the temperature sensor (Sensor 1)
- Switch on the datalogger with the Green start button.
- Press the blue menu button twice until it says "Press Green to start snapshot >"
- Press the Green button. You should see it say "Logging started" and then the display returns to normal.

##### Step 2

Look at the worksheet '**Heat Snapshots**' with pupils. Try to guess which place will have the highest temperature reading and which the lowest.

##### Step 3

Use the worksheet to take snapshot readings. At each place, whoever is taking the reading should hold the tip of the temperature probe in or against the heat source and count slowly to ten, so that the temperature has a chance

to change and it is a fair test (*alternatively, you can watch the display and wait until it stops increasing or decreasing*). Then press the Green button once. You should see it say "Storing readings". It is also important that the snapshots are taken in the same order as on the worksheet, so you can compare results.

**Step 4**

**Very important!** Remember to press the Red button to stop logging. You will see it say "Logging stopped".

**Step 5**



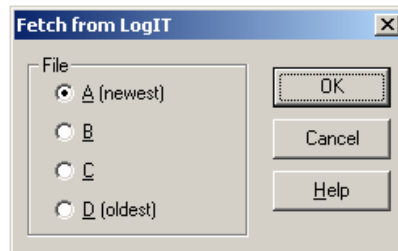
Connect the datalogger to the computer. Double click to open LogIT Lab Level 1 (or 2). Click the Fetch button.

Open RM Favourites folder, then look inside the Datalogger folder.



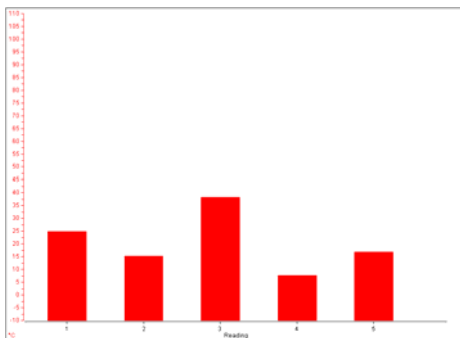
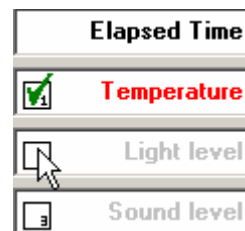
**Step 6**

Click OK to fetch the data.



**Step 7**

On the top right of the graph display, click to remove the tick from the light and sound sensors. Now the graph will only display the temperature data.



The bars on the graph will be in the order that the snapshots were taken. Where was the highest temperature reading? Were you right? The graph can be printed out for pupils to add labels and write about their findings.