

Textease Hints and Tips - Loading a picture from a Mavica Digital Camera

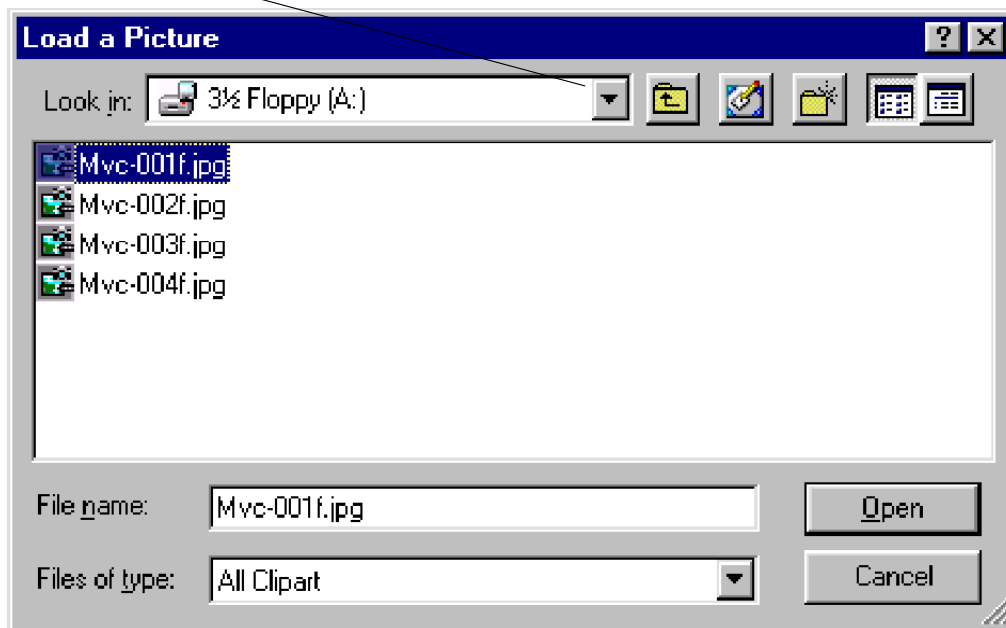
In Scottish Borders Schools we recommend the Mavica range of digital Cameras that have their own disc drive. There is no need for any additional cable or software to import pictures into your document.

Loading Pictures into Textease

Click on the icon "Load Picture at the caret";



On an RM Network, the software will try to load a picture from "My Work" You will have to redirect it to the floppy drive by clicking here and choosing the A: drive




Note;

On RM Networks, pupils do not have easy access to the floppy drive. This is a deliberate policy of RM to avoid misuse of the computer by pupils.

Solution

Pupils should type in "A :\" in the File Name field. " A - colon - backslash "

This will have the same effect as clicking on the  and selecting Floppy [A:]

Now Click on "Open" and the photo will be loaded into the document. Now all the picture manipulation tools are available when you double click on the picture.